

# O.Studios

Lookbook

Spring/Summer '17

'Re—New'

# About Odeur Studios

## A brief history

Odeur was founded by Art director and Designer Petter Hollström in Stockholm in 2006 as a brand experiment. By replacing the traditional word-based logotype with a brand specific scent that is infused in the garments, Odeur was able to become the label with a non-visual logotype. The scent is described as white, clean and light. The triangular shape often used to brand the collection represents the construction of the scent – with a base note, middle note and top note.

The collections are developed drawing from a wide range of inspirations. Elements incorporated are always present in our direct surroundings, including musical, contemporary art, film and architectural references. Odeur embraces such open interaction through its uni-sex and multidisciplinary approach towards design.

Today Odeur is designed by Petter Hollström and Gorjan Lauseger and has spread to over 20 countries, selling clothing, jeans, outerwear, footwear and accessories. From 2013, the newly conceived, effortlessly clean quality accessory line Odeur Artefacts, have been added to the brands portfolio.



# Odeur Basics

## Collection introduction

The Odeur basics line is a newly conceived basics line by Odeur. The collection includes a range of finest cotton basic t-shirt styles with short sleeves and tanks of a high quality and with the same level of detailing as the main line.

This collection is a recurring offer from Odeur and are available to order in season as well.



OB 01 1-1

**Basic T-Shirt**

Standard fit t-shirt in superlight cotton.  
Double stitched over shoulders.

**Fabric**

100% Superlight Cotton

**Colour**

White

**Sizes**

- Extra small
- Small
- Medium
- Large
- Extra Large





OB 01 1-2

Basic T-Shirt

Standard fit t-shirt in superlight cotton.  
Double stitched over shoulders.

Fabric

100% Superlight Cotton

Colour

Black

Sizes

- Extra small
- Small
- Medium
- Large
- Extra Large





OB 02 1-1

Long T-Shirt

Overlong raglan cut t-shirt in superlight cotton. Seam over back. Double stitched over shoulders.

Fabric

100% Superlight Cotton

Colour

White

Sizes

- Extra small
- Small
- Medium
- Large
- Extra Large





OB 02 1-2  
**Long T-Shirt**

Overlong raglan cut t-shirt in superlight cotton. Seam over back. Double stitched over shoulders.

**Fabric**  
100% Superlight Cotton

**Colour**  
White

- Sizes**
- Extra small
  - Small
  - Medium
  - Large
  - Extra Large







OB 03 1-1  
**OverSIZE T-Shirt**

Wide and oversized t-shirt in superlight cotton.

**Fabric**  
100% Superlight Cotton

**Colour**  
White

- Sizes**
- Extra small
  - Small
  - Medium
  - Large
  - Extra Large





OB 03 1-2

**Oversize T-Shirt**

Wide and oversized t-shirt in superlight cotton.

**Fabric**

100% Superlight Cotton

**Colour**

Black

**Sizes**

- Extra small
- Small
- Medium
- Large
- Extra Large





OB 04 1-1  
**Basic Tank**

Turtle neck tank in superlight cotton. Double stitched over shoulders and vertical seam on front and back.

**Fabric**  
100% Superlight Cotton

**Colour**  
White

- Sizes**
- Extra small
  - Small
  - Medium
  - Large
  - Extra Large







OB 04 1-2  
**Basic Tank**

Turtle neck tank in superlight cotton. Double stitched over shoulders and vertical seam on front and back.

**Fabric**  
100% Superlight Cotton

**Colour**  
White

- Sizes**
- Extra small
  - Small
  - Medium
  - Large
  - Extra Large



# Odeur Studios

## S/S '17 — 'Re—New'

Collection introduction

'The sated day is never first. The best day is a day of thirst.'

The Odeur Studios Spring/Summer '17 collection 'Re—New' marks the end and the beginning. It wanders between what was and what will come. It is a blank canvas, yet marked by strokes of the past.

This is the 20th collection by the Stockholm-based label designed by Petter Hollström and Gorjan Lauseger.



20 01 1-1

**Fold T-Shirt**

Oversized t-shirt in fine cotton. Detail seam over upper back. Black "Folded Squares" print.

**Fabric**

100% Fine Cotton

**Colour**

White

**Sizes**

- Extra small
- Small
- Medium
- Large
- Extra Large





20 01 1-2

**Fold T-Shirt**

Oversized t-shirt in fine cotton. Detail seam over upper back. White "Vertical Symbol" print.

**Fabric**

100% Fine Cotton Jersey

**Colour**

Black

**Sizes**

- Extra small
- Small
- Medium
- Large
- Extra Large





20 01 1-3

**Fold T-Shirt**

Oversized t-shirt in fine cotton. Detail seam over upper back.

**Fabric**

100% Fine Cotton Jersey

**Colour**

B/W Dots

**Sizes**

- Extra small
- Small
- Medium
- Large
- Extra Large







20 02 1-1

**Graphic T-Shirt**

Long raglan cut t-shirt in fine cotton. Graphic shaped neck line. Cut in sides with longer front part. "Organic Reflection" artwork print.

**Fabric**

100% Fine Cotton Jersey

**Colour**

White

**Sizes**

- Extra small
- Small
- Medium
- Large
- Extra Large





20 02 1-2

Graphic T-Shirt

Long raglan cut t-shirt in fine cotton. Graphic shaped neck line. Cut in sides with longer front part. Textured black "Minimal Text" print on front.

Fabric

100% Fine Cotton Jersey

Colour

Black

Sizes

- Extra small
- Small
- Medium
- Large
- Extra Large





20 02 1-3

**Graphic T-Shirt**

Long raglan cut t-shirt in fine cotton.  
Graphic shaped neck line. Cut in sides  
with longer front part.

**Fabric**

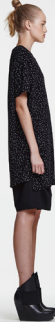
100% Fine Cotton Jersey

**Colour**

B/W Dots

**Sizes**

- Extra small
- Small
- Medium
- Large
- Extra Large







20 03 1-1

**Crystal T-Shirt**

Oversized t-shirt in fine cotton with contrasting fabric details. White “Hommes/Femmes” print over sleeves.

**Fabric**

100% Fine Cotton Jersey/100% PA

**Colour**

White/White

**Sizes**

- Extra small
- Small
- Medium
- Large
- Extra Large





20 03 1-2

Crystal T-Shirt

Oversized t-shirt in fine cotton with contrasting fabric details. Textured black “Re-New Text” print over upper back.

Fabric

100% Fine Cotton Jersey/100% PA

Colour

Black/Black

Sizes

- Extra small
- Small
- Medium
- Large
- Extra Large





20 04 1-1  
**Cut T-Shirt**

Short and wide cut t-shirt in heavy cotton. Contrasting lightweight fabric in sleeves and bottom.

**Fabric**  
100% Heavy Cotton Jersey/100%PA

**Colour**  
Black/Black

- Sizes**
- Extra small
  - Small
  - Medium
  - Large
  - Extra Large





20 05 1-1

**Graphic Tank**

Oversized tank in heavy cotton. Detail seams over shoulders. Cut in sides with longer front part. Black "Vertical Symbol" print.

**Fabric**

100% Heavy Cotton Jersey

**Colour**

White

**Sizes**

- Extra small
- Small
- Medium
- Large
- Extra Large





20 05 1-2

**Graphic Tank**

Oversized tank in fine cotton. Detail seams over shoulders. Cut in sides with longer front part. Black "End/Start Symbol" print.

**Fabric**

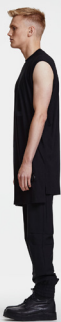
100% Fine Cotton Jersey

**Colour**

Black

**Sizes**

- Extra small
- Small
- Medium
- Large
- Extra Large







20 06 1-1

**Aestival Tank**

Normal fit tank in fine cotton. Raglan detail seams over shoulders. Black "Circular" print.

**Fabric**

100% Fine Cotton Jersey

**Colour**

White

**Sizes**

- Extra small
- Small
- Medium
- Large
- Extra Large





20 06 1-2

**Aestival Tank**

Normal fit tank in fine cotton. Raglan detail seams over shoulders.

**Fabric**

100% Fine Cotton Jersey

**Colour**

B/W Dots

**Sizes**

- Extra small
- Small
- Medium
- Large
- Extra Large





20 08 1-1

**Extended Hood**

Slightly oversized hoodie in heavy cotton. Dropped shoulders. Cut in sides with longer front part. Black "Hommes/ Femmes" print over left sleeve.

**Fabric**

100% Heavy Cotton Jersey

**Colour**

White

**Sizes**

- Extra small
- Small
- Medium
- Large
- Extra Large







20 08 1-2

**Extended Hood**

Slightly oversized hoodie in fine cotton. Droppped shoulders. Cut in sides with longer front part. Textured black "Re-New Text" print over upper chest.

**Fabric**

100% Fine Cotton Jersey

**Colour**

Black

**Sizes**

- Extra small
- Small
- Medium
- Large
- Extra Large





20 09 1-1

**Shield Sweat**

Normal fit raglan cut sweatshirt in brushed cotton. Detail seam over sleeves. White “Re-New” text emroidery over upper back.

**Fabric**

100% Sweat Cotton

**Colour**

Grafit

**Sizes**

- Extra small
- Small
- Medium
- Large
- Extra Large





20 09 1-2

**Shield Sweat**

Normal fit raglan cut sweatshirt in brushed cotton. Detail seam over sleeves. Contrasting textured fabric over shoulders.

**Fabric**

100% Sweat Cotton/100% Pes

**Colour**

Black/Black

**Sizes**

- Extra small
- Small
- Medium
- Large
- Extra Large





20 10 1-1

**Superior Sweat**

Oversized sweatshirt in brushed cotton.  
Dropped shoulders. Black "New Text" print.

**Fabric**

100% Sweat Cotton

**Colour**

Grafit

**Sizes**

- Extra small
- Small
- Medium
- Large
- Extra Large







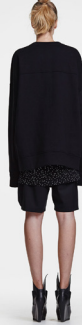
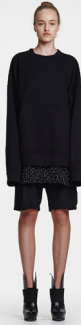
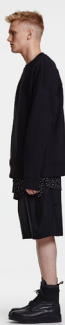
20 10 2-1  
**Superior Pocket Sweat**

Oversized sweatshirt in brushed cotton.  
Dropped shoulders. Pocket over front.

**Fabric**  
100% Sweat Cotton

**Colour**  
Black

- Sizes**
- Extra small
  - Small
  - Medium
  - Large
  - Extra Large





20 11 1-1  
**Superior Collar Sweat**  
  
Oversized sweatshirt in brushed cotton.  
High collar with metallic zipper.  
Dropped shoulders. Drawstring detail.

**Fabric**  
100% Sweat Cotton

**Colour**  
Black

- Sizes**
- Extra small
  - Small
  - Medium
  - Large
  - Extra Large





20 12 1-1  
**Superior Zip Hood**

Oversized sleeveless sweatshirt in brushed cotton. Hooded with meatllic zipper in front. White "Re-New Text" print over upper back.

**Fabric**  
100% Sweat Cotton

**Colour**  
Black

- Sizes**
- Extra small
  - Small
  - Medium
  - Large
  - Extra Large





20 13 1-1

**Fuel Hood**

Slightly oversized hoodie in heavy cotton. Pocket over front.

**Fabric**

100% Heavy Cotton Jersey

**Colour**

Black

**Sizes**

- Extra small
- Small
- Medium
- Large
- Extra Large







20 14 1-1

**Square Raglan Shirt**

Slightly oversized raglan cut shirt in cotton. Black Odeur Studios detail ring in back. Black contrasting square fabric over back with white "Vertical Symbol" print.

**Fabric**  
100% Cotton

**Colour**  
White

- Sizes**
- Extra small
  - Small
  - Medium
  - Large
  - Extra Large





20 14 1-2  
**Square Raglan Shirt**

Slightly oversized raglan cut shirt in cotton. Black Odeur Studios detail ring in back. White contrasting "Broken Symbol" print over back and over back ofsleeves. White "Re-New Text" print over chest.

**Fabric**  
100% Cotton

**Colour**  
Black

- Sizes**
- Extra small
  - Small
  - Medium
  - Large
  - Extra Large





20 15 1-1

**Sublime Shirt**

Slightly oversized shirt in cotton. Double layered fabric detail over chest. Overlong "smoking style" sleeves.

**Fabric**

100% Cotton

**Colour**

White

**Sizes**

- Extra small
- Small
- Medium
- Large
- Extra Large





20 15 1-2

**Sublime Shirt**

Slightly oversized shirt in cotton. Double layered fabric detail over chest. Overlong "smoking style" sleeves.

**Fabric**

100% Cotton

**Colour**

Black

**Sizes**

- Extra small
- Small
- Medium
- Large
- Extra Large





20 16 1-1

**Wide Shirt**

Wide slightly oversized shirt in cotton.  
Contrasting lightweight fabric in  
sleeves and bottom hem.

**Fabric**

100% Cotton/100%PA

**Colour**

Black/Black

**Sizes**

- Extra small
- Small
- Medium
- Large
- Extra Large







20 17 1-1

**Back Blazer**

Long, collarless blazer in wool fabric with black engraved Odeur Studios metallic ring detail. Single button in front. Front and inner pockets. Fully lined. Detachable velcro detail with white "Re-New Collection" print over back.

**Fabric**

98% Wool, 2% EA

**Colour**

Black

**Sizes**

- Extra small
- Small
- Medium
- Large
- Extra Large





20 18 1-1

**Pocket Blazer**

Slightly over sized cut style blazer in wool with collar seam detailing. Two buttons in front. Front and inner pockets. Oversized pockets in front.

**Fabric**

98% Wool, 2% EA

**Colour**

Black

**Sizes**

- Extra small
- Small
- Medium
- Large
- Extra Large





20 19 1-1  
**Pocket Long Blazer**

Slightly over sized elongated style blazer in wool with collar seam detailing. Two buttons in front. Front and inner pockets. Oversized pockets in front. Side cuts. Detachable velcro detail with white "Horizontal Symbol" print over back.

**Fabric**  
98% Wool, 2% EA

**Colour**  
Black

- Sizes**
- Extra small
  - Small
  - Medium
  - Large
  - Extra Large





20 20 1-1  
**Tech Bomber Jacket**

Standard fit bomber jacket in tech material. Two front pockets and fully lined with inner pockets. Zipper pockets on upper left sleeve and lower right sleeve. Knitted cuffs and neck rib.

**Fabric**  
55% PA, 45% PL

**Colour**  
Black

- Sizes**
- Extra small
  - Small
  - Medium
  - Large
  - Extra Large







20 20 1-2  
**Tech Bomber Jacket**

Standard fit bomber jacket in tech material.  
Two front pockets and fully lined with inner  
pockets. Zipper pockets on upper left sleeve  
and lower right sleeve. Knitted cuffs and  
neck rib.

**Fabric**  
70% PA, 30% PU

**Colour**  
Oil

- Sizes**
- Extra small
  - Small
  - Medium
  - Large
  - Extra Large







20 20 1-3  
**Tech Bomber Jacket**

Standard fit bomber jacket in tech material. Two front pockets and fully lined with inner pockets. Zipper pockets on upper left sleeve and lower right sleeve. Knitted cuffs and neck rib.

**Fabric**  
50% PE, 50% PU

**Colour**  
Petrol

- Sizes**
- Extra small
  - Small
  - Medium
  - Large
  - Extra Large





20 21 1-1  
**Ultra Bomber Jacket**

Oversized bomber jacket with overlong sleeves. Double layered with inner part in soft cotton and outer layer in tech material. Two front pockets and fully lined with inner pockets. Zipper pocket on upper left sleeve. Knitted cuffs and neck rib. White "Vertical Re-New" print over back on inner layer.

**Fabric**  
100% Sweat Cotton/100% PA

**Colour**  
Black/White

- Sizes**
- Extra small
  - Small
  - Medium
  - Large
  - Extra Large





20 21 1-2  
**Ultra Bomber Jacket**

Oversized bomber jacket with overlong sleeves.  
Two front pockets and fully lined with inner pockets. Zipper pocket on upper left sleeve.  
Knitted cuffs and neck rib. Detachable velcro detail with white "Femmes/Hommes!" print over back.

**Fabric**  
100% NY

**Colour**  
Camo

- Sizes**
- Extra small
  - Small
  - Medium
  - Large
  - Extra Large







20 21 1-3  
**Ultra Bomber Jacket**

Oversized bomber jacket with overlong sleeves. Two front pockets. Zipper pocket on upper left sleeve. Knitted cuffs and neck rib. Detachable velcrodetail with white "Femmes/Hommes!" print over front chest.

**Fabric**  
100% Pes

**Colour**  
Black

- Sizes**
- Extra small
  - Small
  - Medium
  - Large
  - Extra Large





20 22 1-1

**Box Jacket**

Oversized jeans style jacket with overlong sleeves. Two oversized front chest pockets. Fully lined with inner pockets. Snap button detail in sleeve opening.

**Fabric**

100% NY

**Colour**

Camo

**Sizes**

- Extra small
- Small
- Medium
- Large
- Extra Large







20 22 1-2

**Box Jacket**

Oversized jeans style jacket with overlong sleeves. Oversized front chest pocket. Fully lined with inner pockets. Blazer style button detail in sleeve opening. Detachable velcrodetail with white "Re-New Text" print over front chest.

**Fabric**

100% Pes

**Colour**

Black

**Sizes**

- Extra small
- Small
- Medium
- Large
- Extra Large





20 23 1-1

**Superior Jacket**

Oversized anorak style jacket in tech material. Soft contrast fabric over shoulders. Drawstring detail around lower chest. High collar with metallic zipper.

**Fabric**

70% PA, 30% PU/100% Sweat Cotton

**Colour**

Oil/Black

**Sizes**

- Extra small
- Small
- Medium
- Large
- Extra Large





20 24 1-1

**Odd Jacket**

Slightly over sized graphic cut asymmetric style jacket in textured fabric. Skew zipper over front with two snap buttons. Two side pockets. Overlong sleeves with cut. Detachable velcro detail with white "O.Studios" print over front chest.

**Fabric**

100% Pes

**Colour**

Black

**Sizes**

- Extra small
- Small
- Medium
- Large
- Extra Large





20 25 1-1

**Plain Shorts**

Normal fit shorts in heavy cotton. Side pockets and elastic waistband with drawstring detail.

**Fabric**

100% Heavy Cotton Jersey

**Colour**

Black

**Sizes**

- Extra small
- Small
- Medium
- Large
- Extra Large







20 25 1-2

Plain Shorts

Normal fit shorts in double layer with inner part of fine cotton and outer part in tech fabric. Elastic waistband with drawstring detail. White "Re-New Text" print on back of left leg.

Fabric

70% PA, 30% PU/100% Fine Cotton Jersey

Colour

Oil/Black

Sizes

- Extra small
- Small
- Medium
- Large
- Extra Large







20 25 1-3

Plain Shorts

Normal fit shorts in heavy cotton. Side pockets and elastic waistband with drawstring detail. White "Femmes/Hommes" print over front.

Fabric

100% Heavy Cotton Jersey

Colour

Black

Sizes

- Extra small
- Small
- Medium
- Large
- Extra Large





20 26 1-1  
**Long Pocket Shorts**

Elongated shorts in heavy cotton. Oversized side pockets and elastic waistband with drawstring detail.

**Fabric**  
100% Heavy Cotton Jersey

**Colour**  
Black

- Sizes**
- Extra small
  - Small
  - Medium
  - Large
  - Extra Large





20 27 1-1

Layer Shorts

Normal fit wool shorts with dropped crotch. Detail seams in front and overlapping side parts. Side pockets. Waistband with two buttons and belt loops. Zip fly. Detachable velcro detail with white "Horizontal Symbol" print over left leg. Zip fly.

Fabric

98% Wool, 2% EA

Colour

Black

Sizes

- Extra small
- Small
- Medium
- Large
- Extra Large





20 28 1-1

Quarter Pleat Shorts

Loose fit wool shorts with dropped crotch in soft wool. Pockets on each side in front. Detail seams. Two welt pockets in back. Elongated waistband with one button on each side.

Fabric

98% Wool, 2% EA

Colour

Black

Sizes

- Extra small
- Small
- Medium
- Large
- Extra Large







20 29 1-1

**Boxer Shorts**

Normal fit shorts in double layer with inner layer in fine cotton and outer layer in tech fabric. Elastic waistband. Black "Re-New Back" print on inside fabric in back.

**Fabric**

100% Fine Cotton/100% PA

**Colour**

White/White

**Sizes**

- Extra small
- Small
- Medium
- Large
- Extra Large





20 29 1-2

**Boxer Shorts**

Normal fit shorts in single layer of sheer tech fabric. Elastic waistband.

**Fabric**

100% PA

**Colour**

White

**Sizes**

- Extra small
- Small
- Medium
- Large
- Extra Large





20 30 1-1

**Beyond Pants**

Slightly loose fit wool fabric pant with two pockets in front and detail seam. Two welt pockets in back. Elastic waistband detail in back. Elastic band in bottom of legs. Elongated waistband detail. Zip fly.

**Fabric**

98% Wool, 2% EA

**Colour**

Black

**Sizes**

- Extra small
- Small
- Medium
- Large
- Extra Large





20 30 1-2

**Beyond Pants**

Slightly loose fit heavy cotton fabric pant with two pockets in front and detail seam. Two welt pockets in back. Elastic waistband detail in back. Elastic band in bottom of legs. Elongated waistband detail. Textured black "Re-New" print on front. Zip fly.

**Fabric**

100% Heavy Cotton Jersey

**Colour**

Black

**Sizes**

- Extra small
- Small
- Medium
- Large
- Extra Large







20 31 1-1

Drop Crop Pants

Cropped, loose fit pants with dropped crotch in soft wool. Pockets on each side in front. Two welt pockets in back. Waistband with two buttons and belt loops. Zip fly.

Fabric

98% Wool, 2% EA

Colour

Black

Sizes

- Extra small
- Small
- Medium
- Large
- Extra Large





20 32 1-1  
**Drop Crop Pocket Pants**

Cropped, loose fit pants with dropped crotch in soft wool. Oversized outer pockets on each side. Two welt pockets in back. Elongated waistband detail with two buttons and belt loops. Zip fly.

**Fabric**  
98% Wool, 2% EA

**Colour**  
Black

- Sizes**
- Extra small
  - Small
  - Medium
  - Large
  - Extra Large





20 33 1-1

**Breeze Pants**

Oversized, loose fit pants with pleats soft wool. Pockets on each side in front. Two welt pockets in back. Waistband with button and belt loops. Elastic detail in back of leg opening. Zip fly.

**Fabric**

98% Wool, 2% EA

**Colour**

Black

**Sizes**

- Extra small
- Small
- Medium
- Large
- Extra Large





20 34 1-1

**Oversize Pants**

Over sized pants in heavy cotton. Pleats in front and regular zip with button. Pockets on sides and welt pckets over back.

**Fabric**

100% Heavy Cotton Jersey

**Colour**

Black

**Sizes**

- Extra small
- Small
- Medium
- Large
- Extra Large







20 35 1-1

**Oh Pants**

Over sized pants in heavy cotton. Dropped crotch. Elatsic waistband with drawstring details. Detachable velcro detail with textured black "Re-Newl" print over left leg.

**Fabric**

100% Heavy Cotton Jersey

**Colour**

Black

**Sizes**

- Extra small
- Small
- Medium
- Large
- Extra Large



# Odeur Jeans

## Collection introduction

The Odeur Jeans line is currently showcasing two styles. Over time, the collection of jeans styles, colours and washes will grow. We are working with the best manufacturers of denim and denim production in order to achieve the expected Odeur quality in our jeans production.



OJ 01-1

**Basic Jeans**

Standard fit jeans with slightly dropped crotch. Graphic shaped pockets in front. Odeur pyramid embossed leather label on waistband in back.

**Fabric**

98% Cotton, 2% EA

**Colour**

Black

**Sizes**

- Extra small
- Small
- Medium
- Large
- Extra Large





OJ 01-2

**Basic Jeans**

Standard fit jeans with slightly dropped crotch. Graphic shaped pockets in front. Odeur pyramid embossed leather label on waistband in back.

**Fabric**

98% Cotton, 2% EA

**Colour**

White Wash

**Sizes**

- Extra small
- Small
- Medium
- Large
- Extra Large







OJ 02-1

Drop Jeans

Narrow fit jeans with dropped crotch.  
Graphic shaped pockets in front. Zipper  
pockets in back. Odeur pyramid embossed leather  
label on waistband in back.

Fabric

98% Cotton, 2% EA

Colour

Black

Sizes

- Extra small
- Small
- Medium
- Large
- Extra Large





OJ 02-2

Drop Jeans

Narrow fit jeans with dropped crotch. Graphic shaped pockets in front. Zipper pockets in back. Odeur pyramid embossed leather label on waistband in back.

Fabric

98% Cotton, 2% EA

Colour

White Wash

Sizes

- Extra small
- Small
- Medium
- Large
- Extra Large



# Odeur Artefacts

## Collection introduction

Odeur have launched an opulent collection of leather goods for the label's portfolio. The collection – Odeur Artefacts – features belts, laptop sleeves, sneakers, boots, wedges, wallets and accessory etuis, all meticulously crafted with careful attention to detail and highly innovative finishes.

All pieces are hand-stitched in the finest leather giving an edge to their luxurious refinement. The lush zippers, buttons and closings, are all in silver metallic tones, effortlessly complementing the embossed stamp labelling, that decorates each unique accessory. The collection is presented each season as an addition to the main Odeur collection. Odeur Artefacts is also available to order in season.



OA 01-1

**Skew Card Holder**

Folded card holder in black leather. Two pockets suitable for business cards and credit cards in size 85x55 mm. Handmade in Portugal.

**Material**

Genuine Leather

**Colour**

Black Leather

**Sizes**

- One Size





OA 01-2

**Skew Card Holder**

Folded card holder in white leather. Two pockets suitable for business cards and credit cards in size 85x55 mm. Handmade in Portugal.

**Material**

Genuine Leather

**Colour**

White Leather

**Sizes**

- One Size

**Colour**

White Leather

**Sizes**

- One Size



OA 02-1

**Triangular Key Holder**

Folded key case in black leather with black snap buttons. Dimensions: 9x13 cm. Handmade in Portugal.

**Material**

Genuine Leather

**Colour**

Black Leather

**Sizes**

- One Size



OA 02-2

**Triangular Key Holder**

Folded key case in white leather with silver snap buttons. Dimensions: 9x13 cm. Handmade in Portugal.

**Material**

Genuine Leather

**Colour**

White Leather

**Sizes**

- One Size





OA 03-1

**Strap Belt**

Adjustable waist belt in black leather.  
Tube detail with Odeur Artefact silver  
foil printing. Size: 95 cm. Handmade in  
Portugal.

**Material**

Genuine Leather

**Colour**

Black Leather

**Sizes**

- One Size





OA 03-2

**Strap Belt**

Adjustable waist belt in white leather.  
Tube detail with Odeur Artefact silver  
foil printing. Size: 95 cm. Handmade in  
Portugal.

**Material**

Genuine Leather

**Colour**

White Leather

**Sizes**

- One Size



OA 04-1

**Fold Laptop Case**

Leather bag suitable for 15" laptop or as a clutch. Silver zipper and press button for fastening. Dimensions: 39x26 cm. Handmade in Portugal.

**Material**

Genuine Leather

**Colour**

Black Leather

**Sizes**

- One Size



OA 04-2

Fold Laptop Case

Leather bag suitable for 15" laptop or as a clutch. Silver zipper and press button for fastening. Dimensions: 39x26 cm. Handmade in Portugal.

Material

Genuine Leather

Colour

White Leather

Sizes

- One Size





OA 05-1

**Plain Sneaker**

High top sneakers in black leather. Elastic detail in soft leather instead of laces in front. Odeur Artefacts silver foil stamp on back. Handmade in Italy.

**Material**

Genuine Leather

**Colour**

Black Leather

**Sizes**

- EU 37
- EU 38
- EU 39
- EU 40
- EU 41
- EU 42
- EU 43
- EU 44
- EU 45





OA 05-2

**Plain Sneaker**

High top sneakers in white leather. Elastic detail in soft leather instead of laces in front. Odeur Artefacts silver foil stamp on back. Handmade in Italy.

**Material**

Genuine Leather

**Colour**

White Leather

**Sizes**

- EU 37
- EU 38
- EU 39
- EU 40
- EU 41
- EU 42
- EU 43
- EU 44
- EU 45



OA 06-1

**Solid Boot**

High top boot in genuine treated black leather with solid heavy para sole. Height of sole is 4 cm at heel point. Removable elastic band attached in laces in front. Handmade in Italy.

**Material**

Genuine Leather

**Colour**

Black Leather

**Sizes**

- EU 37
- EU 38
- EU 39
- EU 40
- EU 41
- EU 42
- EU 43
- EU 44
- EU 45



OA 06-2

**Solid Boot**

High top boot in genuine untreated white leather with solid light micro sole. Height of sole is 4 cm at heel point. Removable elastic band attached in laces in front. Handmade in Italy.

**Material**

Genuine Leather

**Colour**

White Leather

**Sizes**

- EU 37
- EU 38
- EU 39
- EU 40
- EU 41
- EU 42
- EU 43
- EU 44
- EU 45



OA 07-1

**Splinth Wedge**

High heel wedge in genuine black leather in graphic cut. Height of heel is 12,5 cm. Elastic band over front. Handmade in Italy.

**Material**

Genuine Leather

**Colour**

Black Leather

**Sizes**

- EU 37
- EU 38
- EU 39
- EU 40
- EU 41
- EU 42
- EU 43
- EU 44
- EU 45



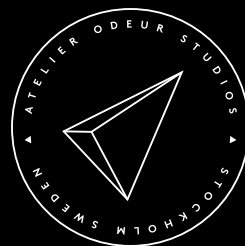
# Contact info

General, Sales & PR

Sales Contact    [contact@odeur.se](mailto:contact@odeur.se)  
+46 70-29 27 104  
[www.odeurstudios.com](http://www.odeurstudios.com)

International PR    Atelier Marlo Saalmink  
Mr. Marlo Saalmink  
[press@marlosaalmink.com](mailto:press@marlosaalmink.com)

Swedish PR    Pretto PR  
Ms. Emelie Carlsson  
[emelie.carlsson@prettopr.com](mailto:emelie.carlsson@prettopr.com)



© 2016 Odeur Studios